

MODDABLE CHESS · VARIANT 52 OF 54

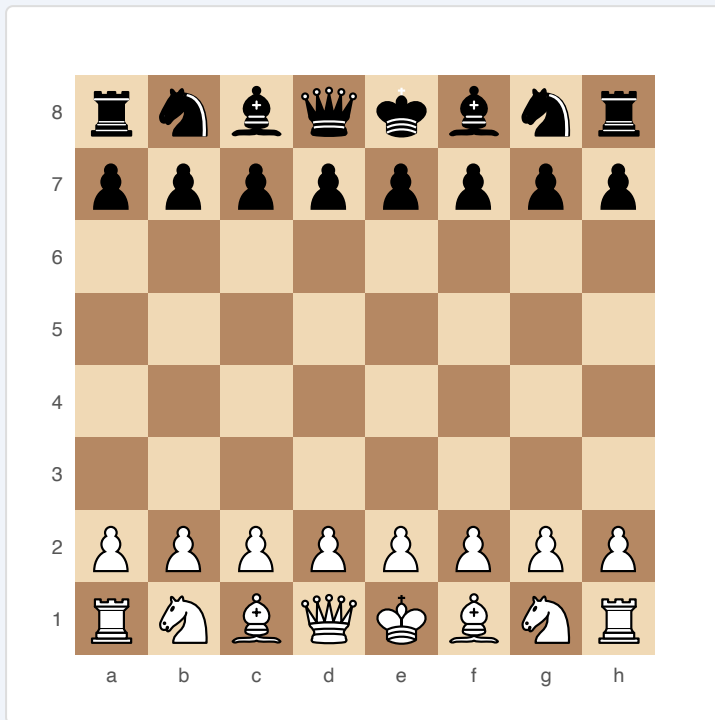
Torpedo Chess

8×8
BOARD

2
PLAYERS

TORPEDO CHESS

Pawns can always double-move, not just from their starting rank. Dramatically accelerates pawn play in the middlegame and endgame.



Torpedo Chess — starting position

SETUP

Board: Standard 8×8.

Setup: Standard chess setup.

FEN: rnbqkbnr/pppppppp/8/8/8/8/PPPPPPPP/RNBQKBNR w KQkq - 0 1

RULES

Identical to standard chess except:

- ♦ Pawns may advance two squares from ANY rank (not just their starting rank), provided both squares are empty.
- ♦ En passant applies whenever a pawn double-moves past an enemy pawn, regardless of which rank it starts from.
- ♦ All other rules unchanged.

WIN CONDITION

Checkmate.

STRATEGY

Passed pawns become much more dangerous because they can sprint two squares at a time. Pawn endgames are sharply different — a pawn on the 5th rank can reach promotion in two moves instead of three. Blockading passed pawns is more difficult. Connected pawns rolling forward together are extremely powerful.

ATTRIBUTION

Variant popularised on Lichess. Public domain.