

MODDABLE CHESS · VARIANT 51 OF 54

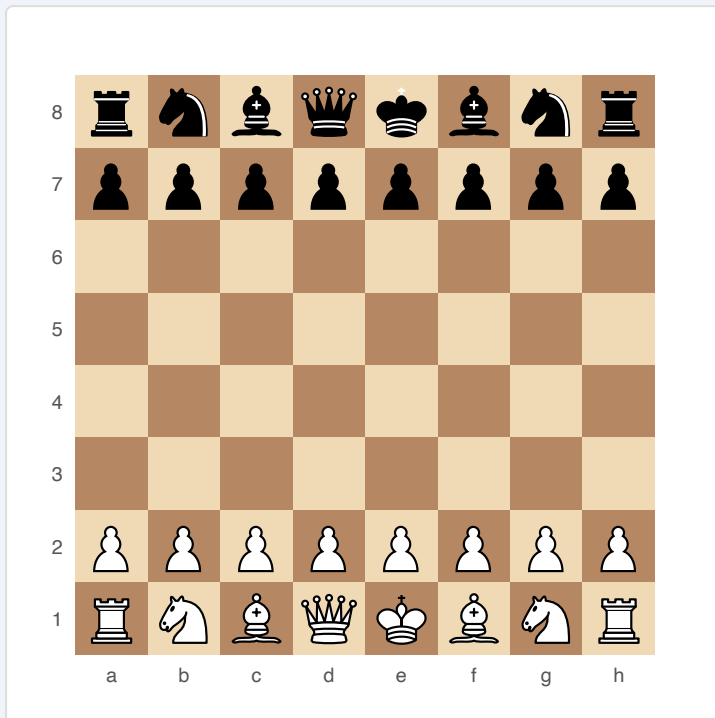
Three-Check

8×8
BOARD

2
PLAYERS

THREE-CHECK

Deliver three checks to win. No checkmate needed. Completely changes the value of forcing moves.



Three-Check — starting position

SETUP

Board: Standard 8×8.

Setup: Standard chess setup.

FEN: rnbqkbnr/pppppppp/8/8/8/8/PPPPPPPP/RNBQKBNR w KQkq - 0 1

RULES

All standard chess rules apply. Each player's check count is tracked throughout the game.

WIN CONDITION

- ♦ Checkmate (as normal), OR
- ♦ Deliver check three times. Each check is counted regardless of whether it was blocked, evaded, or interposed.

STRATEGY

Pieces that give check frequently (Queen, Bishops on open diagonals) become much more valuable. Sacrificing material to deliver checks becomes a core tactic. Defensive play must prioritise minimising the number of times the King is checked, not just surviving.

ATTRIBUTION

Traditional variant. Popularised on Lichess. Public domain.