

MODDABLE CHESS · VARIANT 49 OF 54

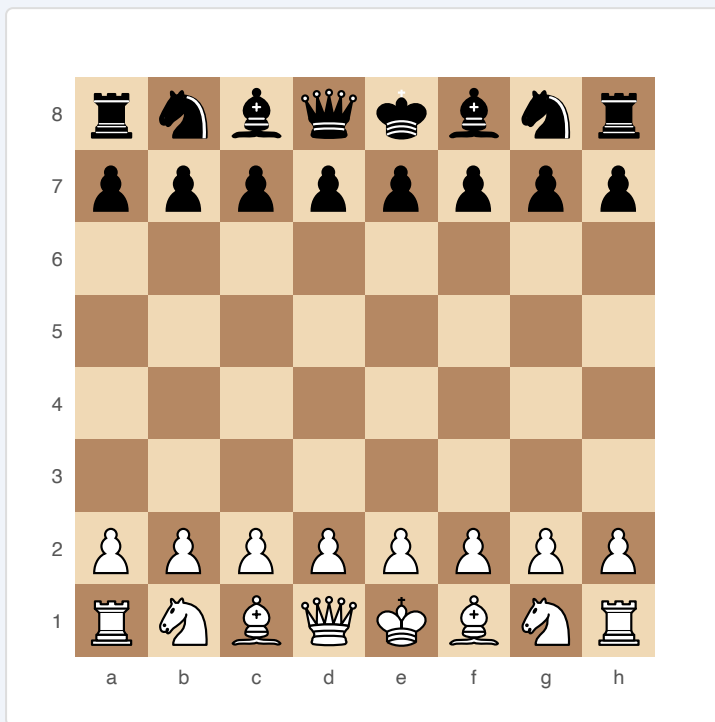
Stalemate Wins

8×8
BOARD

2
PLAYERS

STALEMATE WINS

Standard chess with one rule change: stalemating your opponent wins the game instead of drawing. This eliminates all stalemate-based drawing resources.



Stalemate Wins — starting position

SETUP

Board: Standard 8×8.

Setup: Standard chess starting position.

FEN: rnbqkbnr/pppppppp/8/8/8/8/PPPPPPPP/RNBQKBNR w KQkq - 0 1

RULES

All standard chess rules apply, except:

- ♦ Stalemate is a win for the player who delivered it (not a draw).
- ♦ Check and checkmate work normally.
- ♦ All other draw conditions (threefold repetition, 50-move rule, insufficient material) still apply.

WIN CONDITION

Checkmate OR stalemate your opponent.

STRATEGY

This variant makes King and Pawn endgames far more decisive. In standard chess, many K+P vs K positions are drawn because the defending King reaches a stalemate square. Here, those are all wins. The Queen becomes even more dominant — her ability to restrict the enemy King's squares creates stalemate threats. Trading down when ahead in material is even stronger because stalemate is now a winning technique, not something to avoid.

ATTRIBUTION

Traditional rule modification. Public domain.