

MODDABLE CHESS · VARIANT 48 OF 54

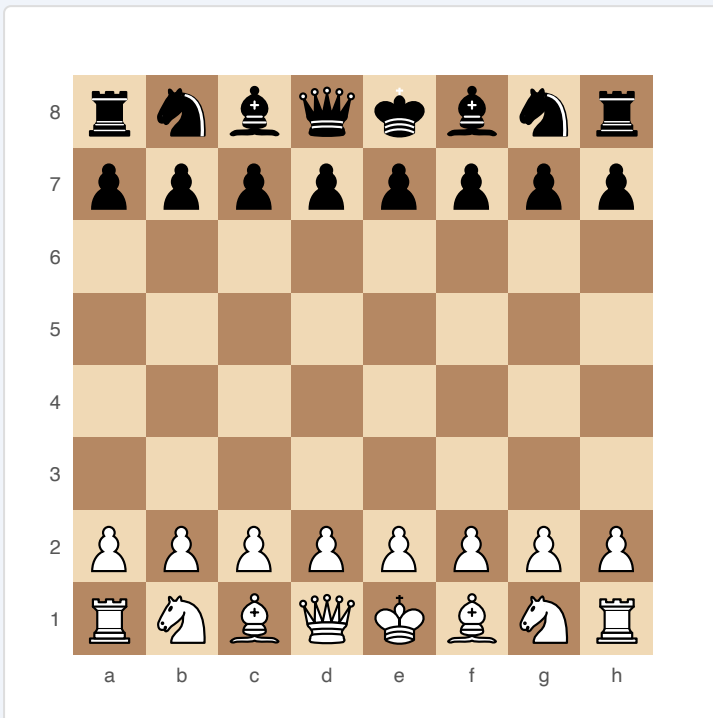
Single-Check

8×8
BOARD

2
PLAYERS

SINGLE-CHECK

One check wins. No checkmate needed — just deliver a single check and the game is over. Every move is life or death.



Single-Check — starting position

SETUP

Board: Standard 8×8.

Setup: Standard chess starting position.

FEN: rnbqkbnr/pppppppp/8/8/8/8/PPPPPPPP/RNBQKBNR w KQkq - 0 1

RULES

All standard chess rules apply, except:

- ♦ The game ends immediately when a player delivers check.
- ♦ Checkmate is not required — any check wins, even if it could be blocked or evaded.
- ♦ Stalemate is still a draw.

WIN CONDITION

Deliver check to the opponent's King.

STRATEGY

The game becomes about pure King safety. Pieces that can give check from a distance (Queen, Bishops, Rooks) are incredibly dangerous. Any discovered check possibility must be neutralised immediately. Development speed is everything — the first player to create a check threat usually wins. Knights are particularly dangerous because their checks cannot be blocked. Games are extremely short.

ATTRIBUTION

Traditional variant. Public domain.