

MODDABLE CHESS · VARIANT 46 OF 54

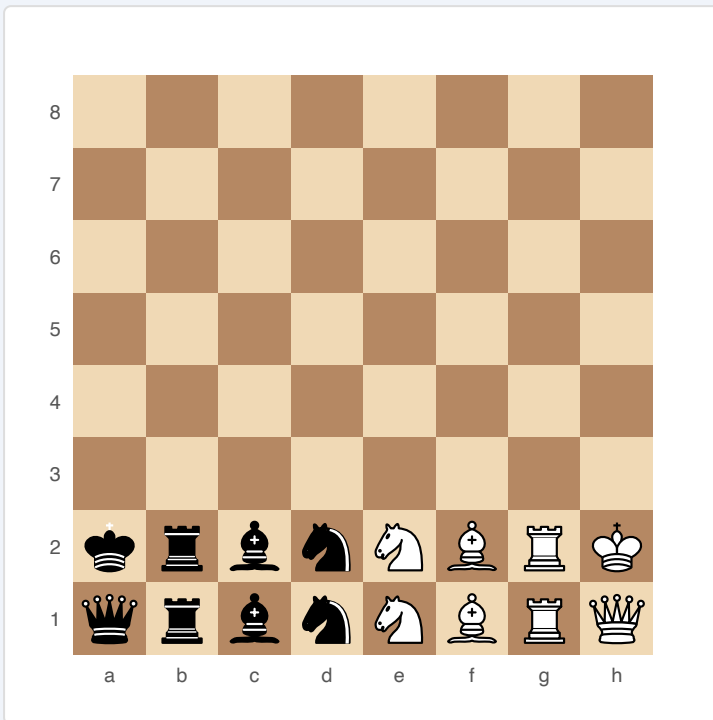
Racing Kings

8×8
BOARD

2
PLAYERS

RACING KINGS

No checks allowed. Race your King to rank 8. A pure positional race with no violence.



Racing Kings — starting position

SETUP

Board: Standard 8×8.

Setup: All pieces start on ranks 1–2 in a specific non-standard arrangement. No pawns.

FEN: 8/8/8/8/8/8/krbnNBRK/qrbnNBRQ w - - 0 1

RULES

- ♦ No move may give check (to either King). Any move that would place either King in check is illegal.
- ♦ No castling. No pawns. No pawn promotion.

WIN CONDITION

First player to move their King to rank 8 wins. If White reaches rank 8, Black gets one more move — if Black also reaches rank 8, the game is a draw.

STRATEGY

Block your opponent's King path while clearing your own. Rooks and Queens control files; Bishops control diagonals. The constraint against giving check makes many "obvious" blocking moves illegal.

ATTRIBUTION

Vernon R. Parton, 1961. Public domain.