

MODDABLE CHESS · VARIANT 44 OF 54

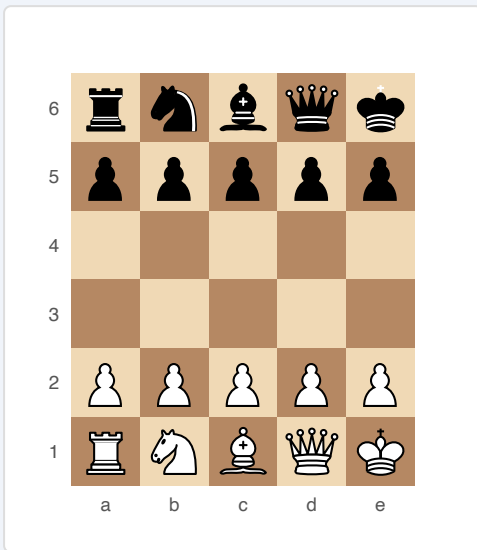
# Petty Chess

**5×6**  
BOARD

**2**  
PLAYERS

# PETTY CHESS

All standard piece types on a 5-file, 6-rank board. Single copies of each piece make every loss devastating.



*Petty Chess — starting position (5×6)*

## SETUP

**Board:** 5 files × 6 ranks.

**Setup (FEN):** rnbqk/ppppp/5/5/PPPPP/RNBQK

- ♦ Rank 6 (Black): r n b q k
- ♦ Rank 5 (Black pawns): p p p p p
- ♦ Ranks 4–3: empty
- ♦ Rank 2 (White pawns): P P P P P
- ♦ Rank 1 (White): R N B Q K

Each side has: King, Queen, Rook, Bishop, Knight, 5 Pawns.

## RULES

- ♦ Standard chess movement for all pieces.
- ♦ Pawns move one square forward only (no double-step).
- ♦ No en passant.
- ♦ No castling (King is on the edge — no room to castle meaningfully).
- ♦ Pawns promote on the far rank to Queen, Rook, Bishop, or Knight.

## WIN CONDITION

Checkmate.

## STRATEGY

Every piece is a single copy — losing any piece is devastating. The Queen is overwhelmingly powerful relative to the board size. The single Bishop is colour-bound, making half the board permanently inaccessible to it. Quick tactical strikes are the norm given the compressed space. Guard the Queen jealously; losing it is almost always decisive.

## ATTRIBUTION

Traditional small chess variant. Public domain.