

MODDABLE CHESS · VARIANT 29 OF 54

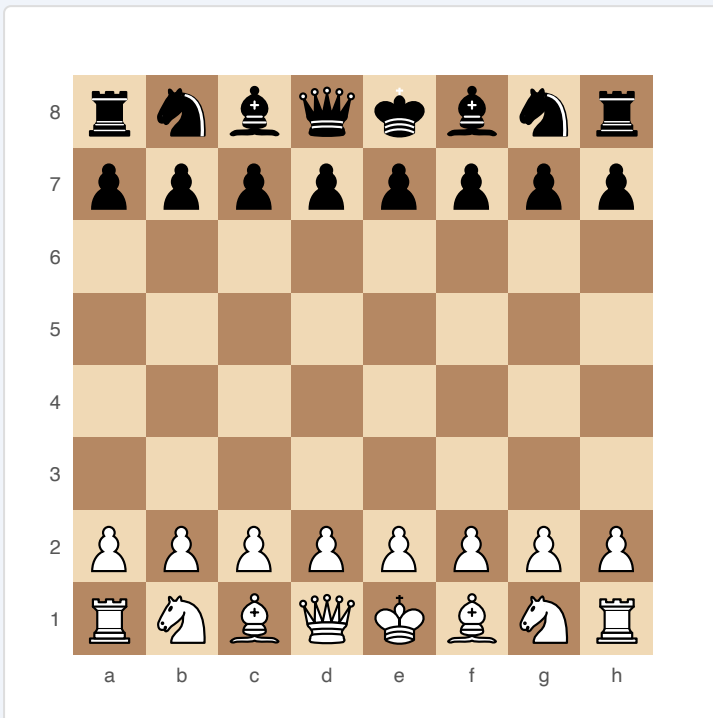
King of the Hill

8×8
BOARD

2
PLAYERS

KING OF THE HILL

Move your King to the centre four squares for an instant win. Transforms the King from a liability into an offensive weapon.



King of the Hill — starting position

SETUP

Board: Standard 8×8.

Setup: Standard chess setup.

FEN: rnbqkbnr/pppppppp/8/8/8/8/PPPPPPPP/RNBQKBNR w KQkq - 0 1

RULES

All standard chess rules apply. No modifications to piece movement, captures, or special moves.

WIN CONDITION

- ♦ Checkmate (as normal), OR
- ♦ Move your King to any of the four centre squares (d4, e4, d5, e5).

STRATEGY

The King becomes an attacking piece. You must balance aggression (advancing the King) with safety (not exposing it to check). Games are shorter and more tactical — passive play is punished because the opponent can simply march their King to the centre.

ATTRIBUTION

Popularised on Lichess and Chess.com. Public domain.