

MODDABLE CHESS · VARIANT 11 OF 54

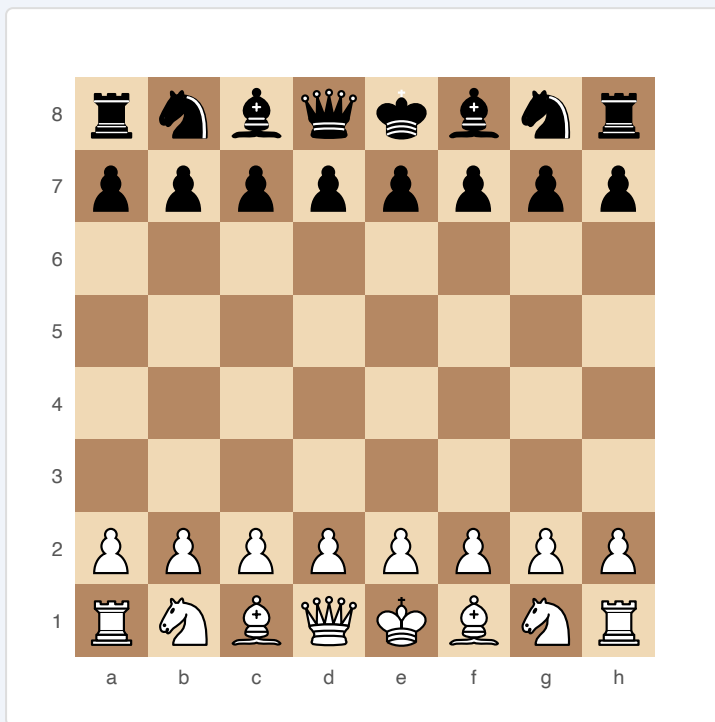
Checkless Chess

8×8
BOARD

2
PLAYERS

CHECKLESS CHESS

You may not give check unless that check is also checkmate. The King becomes a bold attacker since it cannot be casually harassed.



Checkless Chess — starting position

SETUP

Board: Standard 8×8.

Setup: Standard chess starting position.

FEN: rnbqkbnr/pppppppp/8/8/8/8/PPPPPPPP/RNBQKBNR w KQkq - 0 1

RULES

- ♦ Standard chess movement applies.
- ♦ A player may NOT give check unless that check is simultaneously checkmate.
- ♦ Any move that would deliver check (but not checkmate) is illegal.
- ♦ The King can advance aggressively since it cannot be threatened by non-mating moves.
- ♦ If a player has no legal move that avoids giving non-mate check, the position is stalemate (draw).
- ♦ Castling, en passant, and promotion follow standard rules.

WIN CONDITION

Checkmate — the only legal form of check.

STRATEGY

The King becomes a powerful attacking piece — use it actively in the middlegame since it cannot be harassed. Focus on restricting the opponent's King mobility so that when you finally deliver check, it IS mate. Piece coordination for simultaneous multi-square coverage is essential. Long build-ups to a single decisive blow define this variant.

ATTRIBUTION

Traditional variant. Earliest documented reference in Max Lange, 1857. Public domain.