

MODDABLE CHESS · VARIANT 10 OF 54

# Capablanca Chess

**10×8**  
BOARD

**2**  
PLAYERS

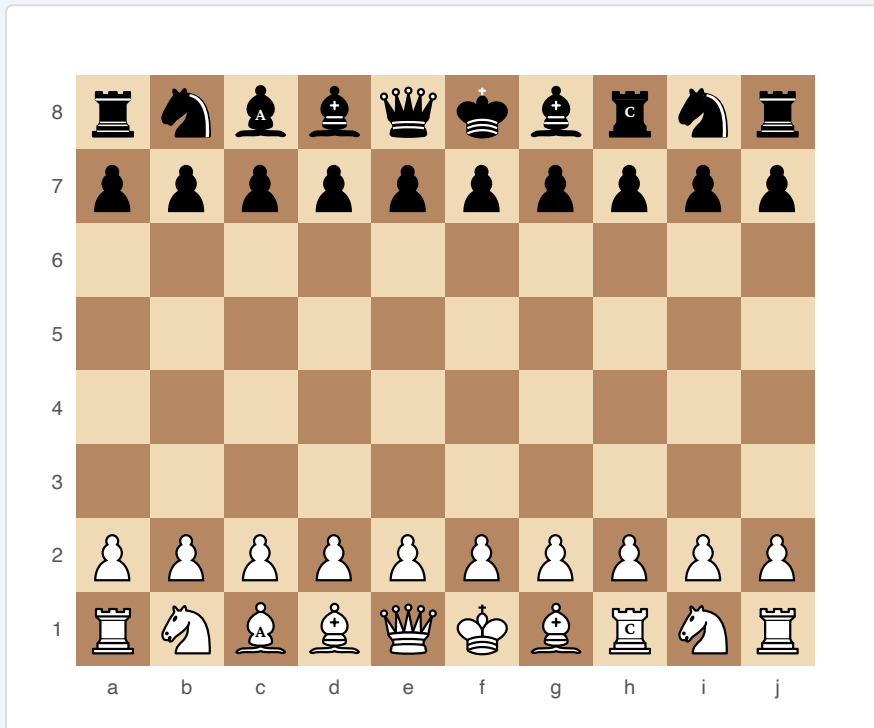
# CAPABLANCA CHESS

Invented by World Champion José Raúl Capablanca in the 1920s to address what he saw as the “draw death” of standard chess. A larger board with two new compound pieces creates richer tactical possibilities.

## SETUP

**Board:** 10×8 (ten files, eight ranks).

**FEN:** r nabqkbcnr/pppppppppp/10/10/10/10/PPPPPPPPPP/RNABQKBCNR w KQkq - 0 1



Capablanca Chess — starting position (10×8)

## PIECES

**Pieces (per side):** Standard 16 pieces plus:

- ♦ **Archbishop** (♖+♘) — combines Bishop and Knight movement. Placed between the Queen’s Knight and Queen’s Bishop.
- ♦ **Chancellor** (♖+♞) — combines Rook and Knight movement. Placed between the King’s Knight and King’s Bishop.

**Setup (from a-file):** Rook, Knight, Archbishop, Bishop, Queen, King, Bishop, Chancellor, Knight, Rook. Pawns on the second rank (10 pawns per side).

## RULES

Identical to standard chess with these additions:

- ♦ Castling moves the King three squares toward the Rook (to accommodate the wider board).
- ♦ Pawns may promote to Archbishop or Chancellor in addition to standard pieces.
- ♦ No en passant differences — same rules apply.

## WIN CONDITION

Checkmate, same as standard chess.

## STRATEGY

The wider board and compound pieces create more open positions. The Archbishop dominates closed diagonals while the Chancellor controls open files with knight-fork threats. Pawn structure is more flexible with 10 files — flank play becomes viable alongside central control.

## ATTRIBUTION

José Raúl Capablanca, c. 1920. Public domain.