

MODDABLE CHESS · VARIANT 3 OF 54

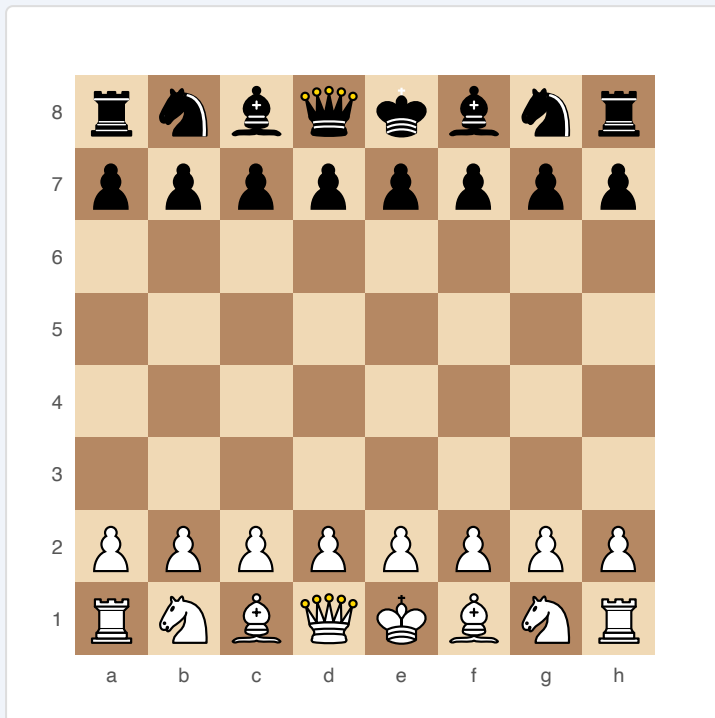
Amazon Chess

8×8
BOARD

2
PLAYERS

AMAZON CHESS

Both Queens are replaced by Amazons — the most powerful piece possible, combining Queen and Knight movement.



Amazon Chess — starting position

SETUP

Board: Standard 8×8.

Setup (FEN): rnbmkbnr/pppppppp/8/8/8/8/PPPPPPPP/RNBMKBNR

Both sides: Rook, Knight, Bishop, Amazon, King, Bishop, Knight, Rook (+ 8 pawns).

PIECES

Pieces:

- **Amazon (M)** — combines Queen and Knight movement. Can slide along ranks, files, and diagonals (like a Queen) OR jump in L-shapes (like a Knight). The most powerful piece in any chess variant.

RULES

All standard chess rules apply. Amazons replace Queens for both sides symmetrically.

WIN CONDITION

Checkmate, same as standard chess.

STRATEGY

The Amazon is devastatingly powerful — it controls more squares than any other piece and cannot be blocked by interposing. Games tend to be shorter and more tactical because the Amazon's range makes defence extremely difficult. Trading Amazons early simplifies into a near-standard endgame. Keeping your Amazon active while restricting the opponent's is the key strategic tension.

ATTRIBUTION

Traditional fairy chess piece. Variant is public domain.