

MODDABLE CHESS · VARIANT 2 OF 54

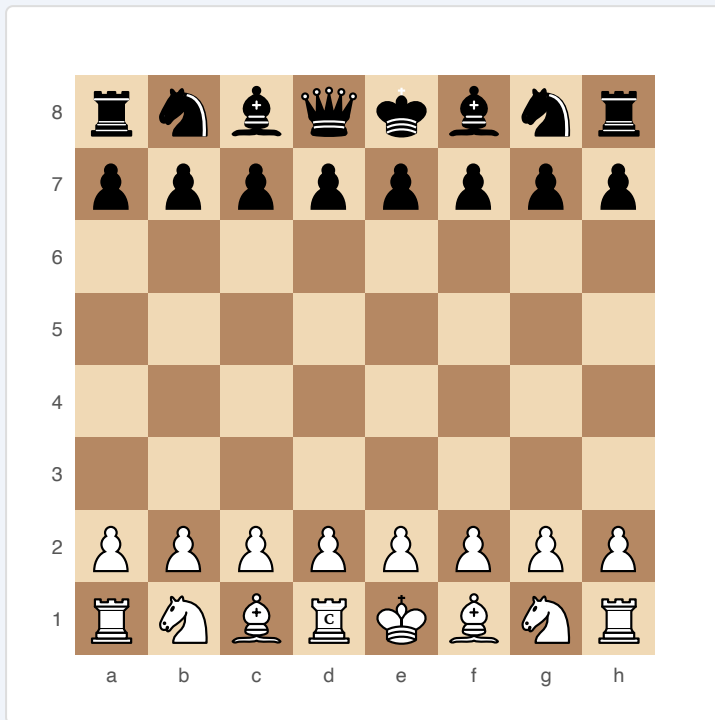
# Almost Chess

**8×8**  
BOARD

**2**  
PLAYERS

# ALMOST CHESS

One Queen is replaced by a Chancellor (Rook + Knight compound). “Almost” standard chess — one piece different, but the implications ripple through the entire game.



*Almost Chess — starting position*

## SETUP

**Board:** Standard 8×8.

**Setup (FEN):** rnbqkbnr/pppppppp/8/8/8/8/PPPPPPPP/RNBCKBNR

White: Rook, Knight, Bishop, Chancellor, King, Bishop, Knight, Rook (+ 8 pawns). Black: Standard setup (with Queen).

## PIECES

**Pieces:**

- ◆ **Chancellor** © — combines Rook and Knight movement. Can slide along ranks/files like a Rook OR jump in L-shapes like a Knight. Placed on d1 (where White’s Queen normally sits).

## **RULES**

All standard chess rules apply. The Chancellor replaces White's Queen only. Black retains their standard Queen.

## **WIN CONDITION**

Checkmate, same as standard chess.

## **STRATEGY**

The Chancellor is slightly weaker than a Queen (no diagonal sliding) but has the Knight's forking ability combined with Rook-length reach. White lacks diagonal firepower from d1 and must rely more on Bishops. The Chancellor excels at forks — combining Rook pins with Knight threats. Black's Queen gives them an advantage on open diagonals.

## **ATTRIBUTION**

Ralph Betza, 1977. Public domain.